

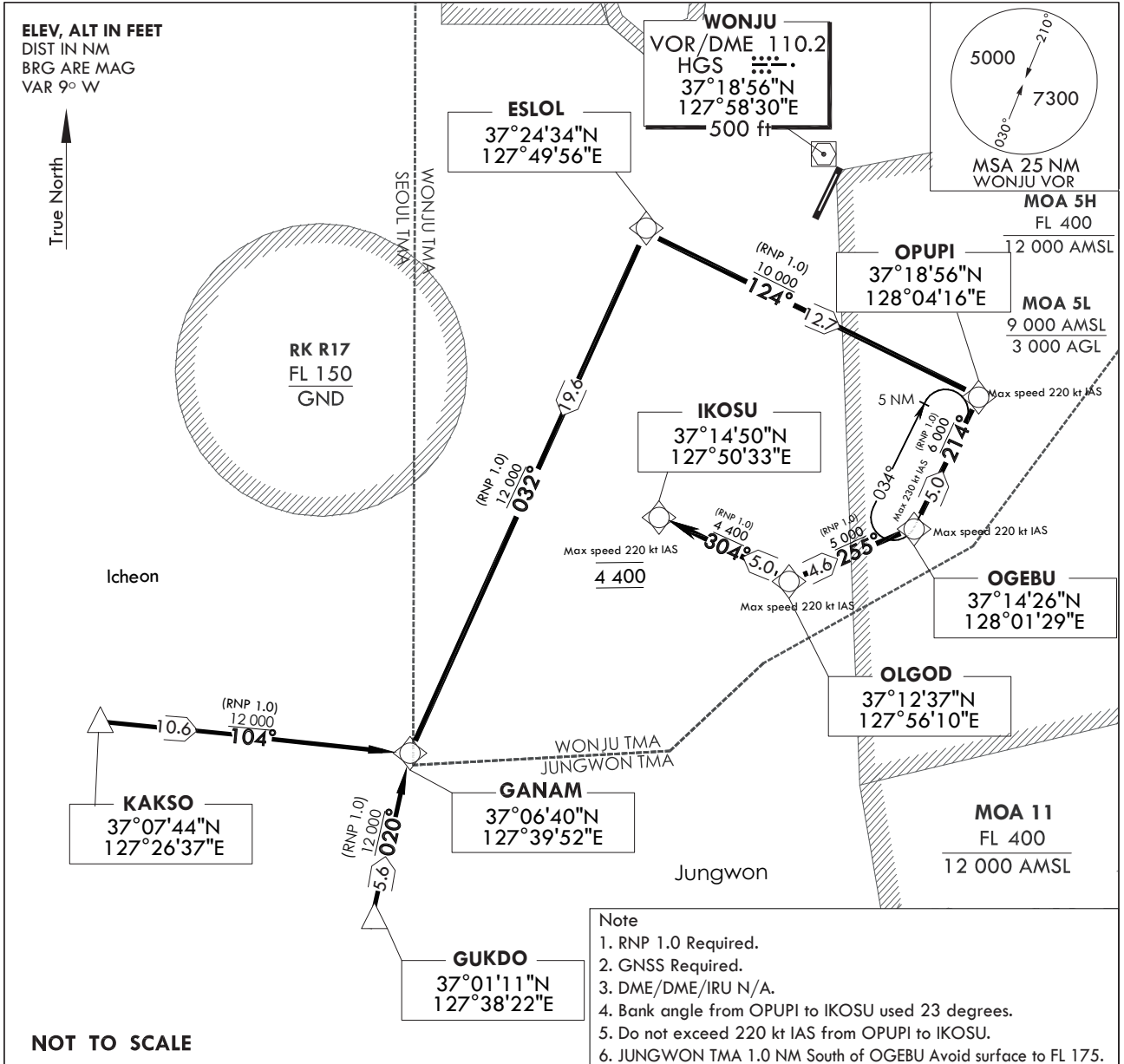
**STANDARD ARRIVAL CHART
INSTRUMENT(STAR)**

TRANSITION ALT 14 000
TRANSITION LVL FL 140

WONJU APP	130.2	234.4	255.0
WONJU TWR	126.2	118.325	
	236.6	265.5	

**WONJU/Wonju (RKNW)
RWY 03
RNAV(GNSS) GANAM 1**

Note : Arrival under U.S TERPS.



NOT TO SCALE

- Note
1. RNP 1.0 Required.
 2. GNSS Required.
 3. DME/DME/IRU N/A.
 4. Bank angle from OPUPI to IKOSU used 23 degrees.
 5. Do not exceed 220 kt IAS from OPUPI to IKOSU.
 6. JUNGWON TMA 1.0 NM South of OGEBU Avoid surface to FL 175.

ARRIVAL ROUTE DESCRIPTION

KAKSO TRANSITION

From KAKSO on track 104° to cross GANAM at or above 12 000 ft thence....

GUKDO TRANSITION

From GUKDO on track 020° to cross GANAM at or above 12 000 ft thence....

....From GANAM on track 032° to cross ESLOL at or above 12 000 ft, then on track 124° to cross OPUPI at or above 10 000 ft, then on track 214° to cross OGEBU at or above 6 000 ft, then on track 255° to cross OLGOD at or above 5 000 ft, then on track 304° to cross IKOSU at 4 400 ft. Expect RNAV approach.

WONJU/Wonju (RKNW)
RWY 03
RNAV(GNSS) GANAM 1

AERONAUTICAL DATA TABULATION

Standard Instrument Arrival Procedure Coding Tables

RNAV(GNSS) GANAM 1

Serial Number	Path Descriptor	Waypoint Identifier	Fly -Over	Course/Track ° M(° T)	Distance (NM)	Turn Direction	Altitude (ft)	Speed (kt)	Coordinates	VPA /TCH	Navigation specification	Remarks
001	TF	ESL0L	-	032(024.1)	19.6	-	+12 000	-	37°24'34.20"N 127°49'55.77"E	-	RNP APCH	-
002	TF	OPUPI	-	124(116.2)	12.7	-	+10 000	-220	37°18'55.50"N 128°04'15.64"E	-	RNP APCH	-
003	TF	OGEBU	-	214(206.3)	5.0	-	+6 000	-220	37°14'26.31"N 128°01'28.98"E	-	RNP APCH	IAF
004	TF	OLGOD	-	255(246.9)	4.6	-	+5 000	-220	37°12'37.42"N 127°56'09.75"E	-	RNP APCH	IF
005	TF	IKOSU	-	304(296.3)	5.0	-	4 400	-220	37°14'50.45"N 127°50'32.84"E	-	RNP APCH	IF

KAKSO Transition

Serial Number	Path Descriptor	Waypoint Identifier	Fly -Over	Course/Track ° M(° T)	Distance (NM)	Turn Direction	Altitude (ft)	Speed (kt)	Coordinates	VPA /TCH	Navigation specification	Remarks
001	TF	KAKSO	-	-	-	-	-	-	37°07'44.60"N 127°26'37.40"E	-	RNP APCH	-
002	TF	GANAM	-	104(095.7)	10.6	-	+12 000	-	37°06'40.05"N 127°39'52.09"E	-	RNP APCH	-

GUKDO Transition

Serial Number	Path Descriptor	Waypoint Identifier	Fly -Over	Course/Track ° M(° T)	Distance (NM)	Turn Direction	Altitude (ft)	Speed (kt)	Coordinates	VPA /TCH	Navigation specification	Remarks
001	TF	GUKDO	-	-	-	-	-	-	37°01'10.93"N 127°38'22.86"E	-	RNP APCH	-
002	TF	GANAM	-	020°(012.3°)	5.6	-	+12 000	-	37°06'40.05"N 127°39'52.09"E	-	RNP APCH	-

Holding Data

Serial Number	Path Descriptor	Waypoint Identifier	Fly -Over	Course/Track ° M(° T)	Distance (NM)	Turn Direction	Altitude (ft)	Speed (kt)	Coordinates	Remarks
001	TF	OGEBU	-	214(206.3)	5.0	-	-	-230	37°14'26.31"N 128°01'28.98"E	Holding at OGEBU NE Right Turn 214° Inbound 5 NM Leg.

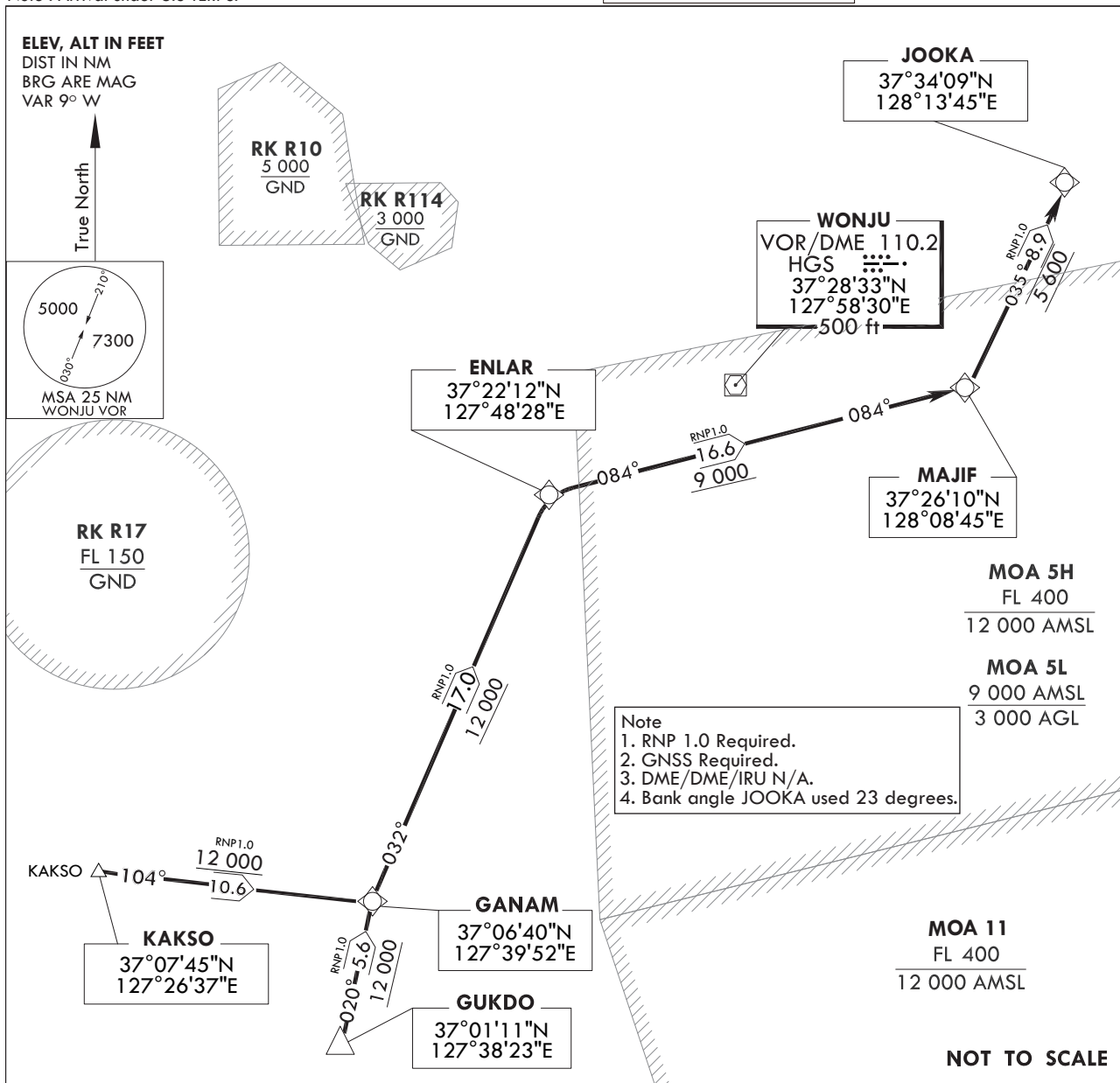
**STANDARD ARRIVAL CHART
INSTRUMENT(STAR)**

TRANSITION ALT 14 000
TRANSITION LVL FL 140

WONJU APP 130.2
234.4 255.0
WONJU TWR 126.2 118.325
236.6 265.5

**WONJU/Wonju (RKNW)
RWY 21
RNAV(GNSS) GANAM 2**

Note : Arrival under U.S TERPS.



ARRIVAL ROUTE DESCRIPTION

KAKSO TRANSITION

From KAKSO on track 104° to cross GANAM at or above 12 000 ft thence....

GUKDO TRANSITION

From GUKDO on track 020° to cross GANAM at or above 12 000 ft thence....

....From GANAM on track 032° to cross ENLAR at or above 12 000 ft, then on track 084° to cross MAJIF at or above 9 000 ft, then on track 035° to cross JOOKA at 5 600 ft. Expect RNAV approach.

WONJU/Wonju (RKNW)
RWY 03
RNAV(GNSS) GANAM 2

AERONAUTICAL DATA TABULATION

Standard Instrument Arrival Procedure Coding Tables

RNAV(GNSS) GANAM 2

Serial Number	Path Descriptor	Waypoint Identifier	Fly -Over	Course/Track ° M(° T)	Distance (NM)	Turn Direction	Altitude (ft)	Speed (kt)	Coordinates	VPA /TCH	Navigation specification	Remarks
001	TF	ENLAR	-	032(023.8)	17.0	-	+12 000	-	37°22'12.18"N 127°48'28.24"E	-	RNP APCH	-
002	TF	MAJIF	-	084(076.1)	16.6	-	+9 000	-	37°26'09.80"N 128°08'45.31"E	-	RNP APCH	-
003	TF	JOOKA	-	035(026.5)	8.9	-	5 600	-	37°34'08.84"N 128°13'45.27"E	-	RNP APCH	-

KAKSO Transition

Serial Number	Path Descriptor	Waypoint Identifier	Fly -Over	Course/Track ° M(° T)	Distance (NM)	Turn Direction	Altitude (ft)	Speed (kt)	Coordinates	VPA /TCH	Navigation specification	Remarks
001	TF	KAKSO	-	-	-	-	-	-	37°07'44.60"N 127°26'37.40"E	-	RNP APCH	-
002	TF	GANAM	-	104(095.7)	10.6	-	+12 000	-	37°06'40.05"N 127°39'52.09"E	-	RNP APCH	-

GUKDO Transition

Serial Number	Path Descriptor	Waypoint Identifier	Fly -Over	Course/Track ° M(° T)	Distance (NM)	Turn Direction	Altitude (ft)	Speed (kt)	Coordinates	VPA /TCH	Navigation specification	Remarks
001	TF	GUKDO	-	-	-	-	-	-	37°01'10.93"N 127°38'22.86"E	-	RNP APCH	-
002	TF	GANAM	-	020°(012.3°)	5.6	-	+12 000	-	37°06'40.05"N 127°39'52.09"E	-	RNP APCH	-